

# SCREW CONVEYOR TYPE CUH

## GENERAL

Brand	Heavy duty through conveyor
Model	CUH
Capacity range	15-475 m <sup>3</sup> /h
Application	Efficient conveying of dry bulk materials

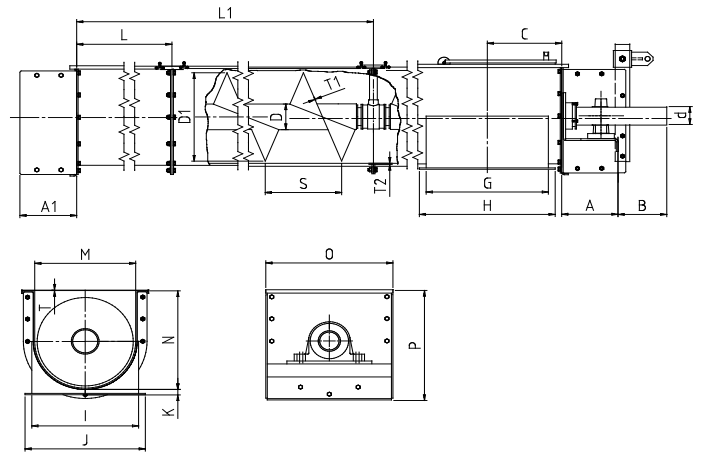


## Design

The through conveyor type CUH is a heavy duty industrial model, designed for horizontal or slightly ascending transport of sand, cinders and wearing powders.

The construction is a dust-proof steel construction with trough sections of 2 m., strong inner centre tube, flight of circular blanks with completely welded on one side, SY-free-standing bearings and adjustable packing boxes with Teflon packings.

A principle of intermediate bearing is applied, ensuring easy replacement of the wearing parts. The material used for the bearing is bronze as standard.



## Conveyor type CUH - DIMENSIONS

	CUH 150	CUH 200	CUH 250	CUH 300	CUH 350	CUH 400	CUH 450	CUH 500
A	170	170	168	198	198	232	232	232
A1	172	172	172	204	204	234	234	234
B	90	90	92	131	171	201	201	201
C	207	207	257	258	283	307	332	356
d	35	35	35	60	60	80	80	80
D	88.9 x 4.9	88.9 x 4.9	88.9 x 4.9	114.3 x 5.4	114.3 x 5.4	114.3 x 5.4	114.3 x 5.4	114.3 x 5.4
D1	146	196	246	294	344	396	446	496
G	304	304	404	406	456	504	554	602
H	350	350	450	450	510	560	610	660
I	182	232	282	338	388	440	490	542
J	228	278	328	382	442	496	546	600
K	20	20	20	24	24	24	24	24
L	2 000	2 000	2 000	2 000	2 000	2 000	2 000	2 000
L1	5 000	5 000	5 000	6 000	6 000	6 000	6 000	6 000
M	162	212	262	314	364	416	466	516
N	183	233	286	341	391	442	492	543
O	270	320	370	424	504	558	608	662
P	224	281	328	382	447	499	549	601
S	130	175	225	260	305	315	335	390
T	2	2	2	2	2	2	2	2
T1	5	5	5	6	6	8	8	8
T2	5	5	5	5	6	6	6	6
Kg basic suppl.	40	54	68	105	130	170	195	215
Kg/m	38	50	60	80	90	120	130	145

All dimensions are in mm. Weights are excl. gear, motor and coupling

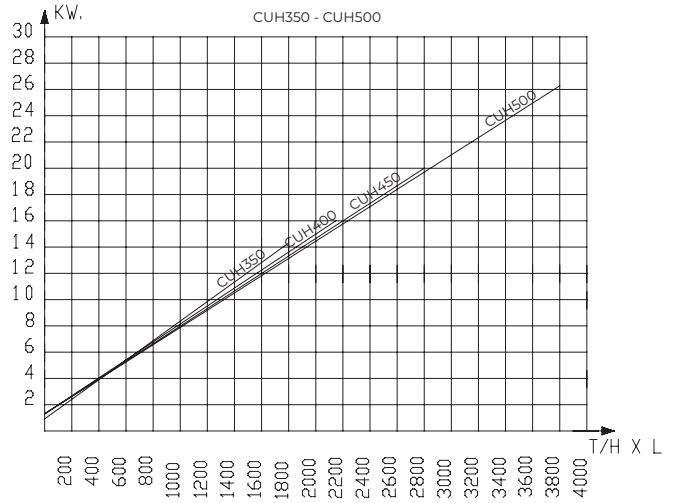
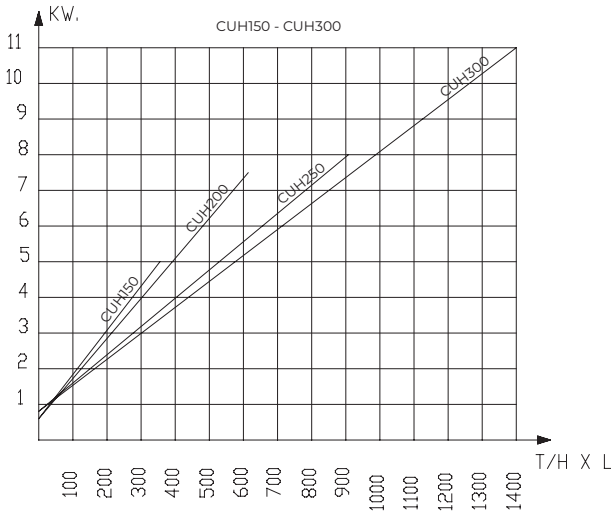
## Conveyor type CUH - CAPACITY

CAPACITY for every 5 degrees inclination, the capacity will drop 10%

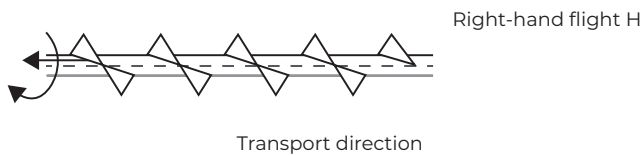
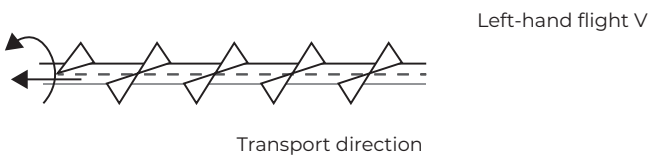
Material	Grain		Flour		Coarser products	
	Max. rpm.	m <sup>3</sup> /h with 50% filling and max. rpm.	Max. rpm.	m <sup>3</sup> /h with 40% filling and max. rpm.	Max. rpm.	m <sup>3</sup> /h with 30% filling and max. rpm.
CUH 150	320	18	160	7	130	4.5
CUH 200	240	32	120	13	95	7.3
CUH 250	190	55	95	22	75	13.0
CUH 300	160	80	80	32	65	19.5
CUH 350	160	132	80	53	65	32.0
CUH 400	140	153	70	62	55	36.0
CUH 450	130	195	65	78	50	45.0
CUH 500	115	250	60	104	45	59.0

# SCREW CONVEYOR TYPE CUH

Recommended effect diagrams for horizontal conveyor in standard version:



Flights can be delivered as right-hand or left-hand.  
As standard, the conveyors are delivered as right-hand.



The diagrams apply for light powder products etc, effect factor 2.3. By strongly wearing material, such as sand, salt etc., effect factor 3-6 is used. By special conveyors and extraction conveyors under silos the diagrams do not apply.

T/H = Tonne/hour - L= Length in meters

Examples of effect factors:

Effect factor 3.0 – Sawdust

Effect factor 3.5 – Coconut deposits

Effect factor 4.0 – Bone meal, cement, gypsum, earth, clay

Effect factor 5.0 – Fertiliser

Effect factor 6.0 – Ashes, cinders, sand, salt