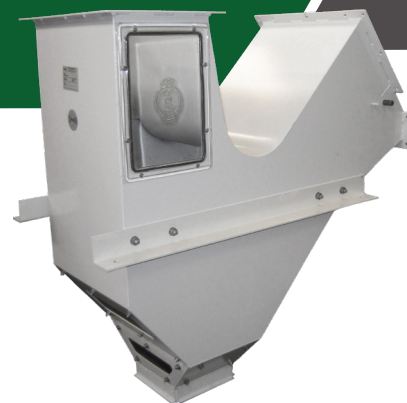
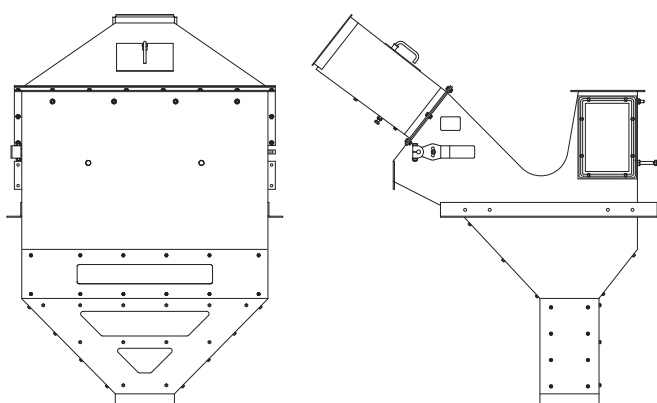


ASPIRATOR CR-163.10



GENERAL

Brand	Cimbria
Designation	Aspirator
Model	CR-163.10
Use	Industry
Application	Removal of dust, chaff, and other light particles from cereal grains, pulses, oilseeds etc.



AIR SUPPLY AND EXTRACTION

Aspiration volume	7 500 m ³ /h
-------------------	-------------------------

ENVIRONMENTAL CONDITIONS

Environment	Indoors
Temperature	From -40°C to +70°C
Altitude	Any

SURFACE PROTECTION

Casing	Paint (corrosivity category C2; low durability)
--------	---

LIFETIME

Intended life limit	20 years
---------------------	----------

PERFORMANCE

Materials	Bulk density t/m ³	Moisture content %	Capacity t/h
Barley	0.68	20	100
Maize	0.71	20	100
Malt	0.35	4	70
Peas, common	0.7	20	90
Rice, paddy	0.51	20	50
Rye	0.69	20	100
Sorghum	0.64–0.81	20	100
Soybeans	0.69–0.77	20	90
Sunflower	0.47–0.65	14	50
Wheat	0.76	20	100

Note: Capacities are for material with up to 10% impurities. Capacities may vary for different impurity and moisture contents.

DIMENSIONS

Overall length	1 402 mm
Overall height	1 584 mm
Overall width	1 120 mm

WEIGHT

Weight, empty	110 kg
Weight, operating (wheat)	250 kg
Weight, choked (wheat)	565 kg