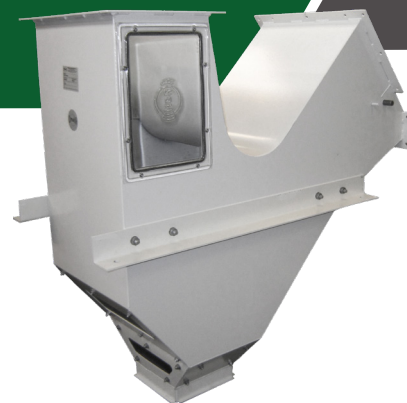
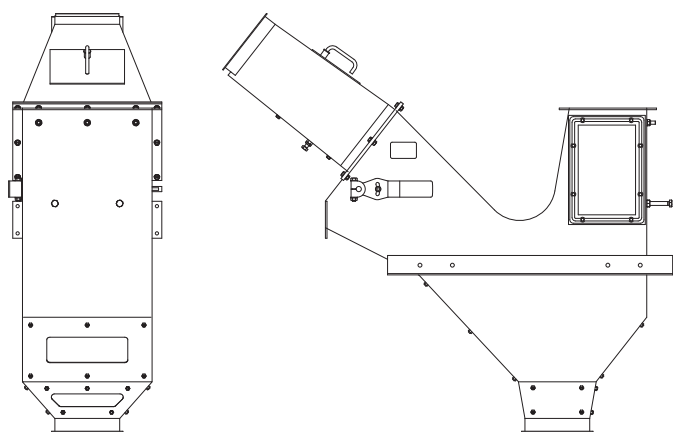


ASPIRATOR CR-163.04



GENERAL

Brand	Cimbria
Designation	Aspirator
Model	CR-163.04
Use	Industry
Application	Removal of dust, chaff, and other light particles from cereal grains, pulses, oilseeds etc.



AIR SUPPLY AND EXTRACTION

Aspiration volume	3 000 m ³ /h
-------------------	-------------------------

ENVIRONMENTAL CONDITIONS

Environment	Indoors
Temperature	From -40°C to +70°C
Altitude	Any

SURFACE PROTECTION

Casing	Paint (corrosivity category C2; low durability)
--------	---

LIFETIME

Intended life limit	20 years
---------------------	----------

PERFORMANCE

Materials	Bulk density t/m ³	Moisture content %	Capacity t/h
Barley	0.68	20	40
Maize	0.71	20	40
Malt	0.52	4	28
Peas, common	0.7	20	36
Rice, paddy	0.51	20	20
Rye	0.69	20	40
Sorghum	0.64	20	40
Soybeans	0.72	20	36
Sunflower	0.4	14	20
Wheat	0.76	20	40

Note: Capacities are for material with up to 10% impurities. Capacities may vary for different impurity and moisture contents.

DIMENSIONS

Overall length	1 390 mm
Overall height	1 293 mm
Overall width	474 mm

WEIGHT

Weight, empty	70 kg
Weight, operating (wheat)	125 kg
Weight, choked (wheat)	250 kg